

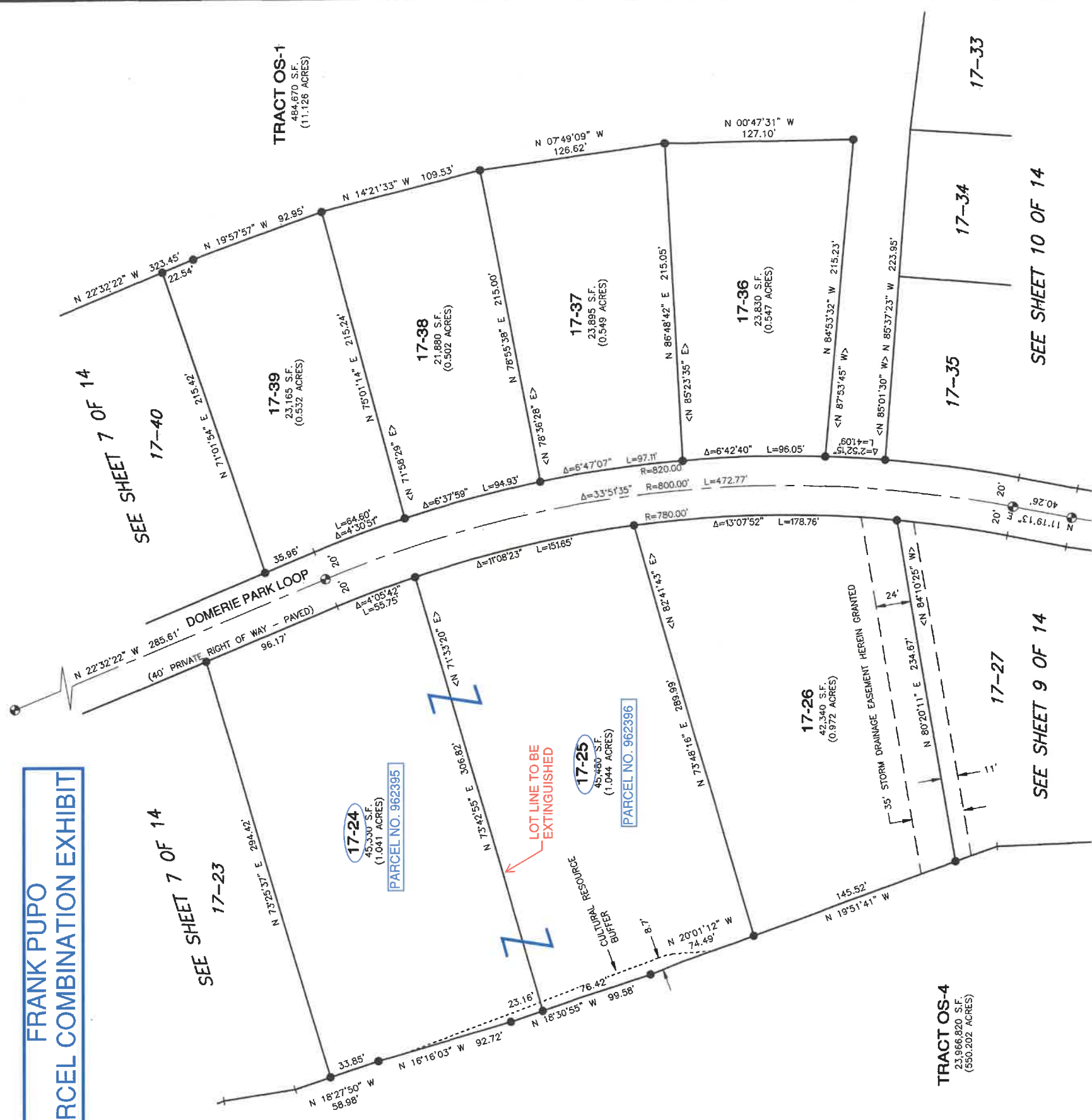
**SUNCADIA - PHASE 3 DIVISION 17
(TUMBLE CREEK)**

A PORTION OF SECTION 15, T. 20 N., R. 14 E., W.M.
KITITAS COUNTY, WASHINGTON

ASSESSOR MAP NUMBERS 20-14-15000-0002 AND 20-14-15000-0005 (PARCEL NUMBERS 11833 AND 16212)

LP-21-00002
LPF-22-00002

**FRANK PUPO
PARCEL COMBINATION EXHIBIT**



- LEGEND**
- ⊕ = SET SURFACE BRASS CAP, STAMPED "LS 44925"
 - = SET 5/8" REBAR WITH CAP STAMPED: "ESM LLC 44925 45782". IN THE EVENT THAT A NON-REMOVABLE OBSTACLE PREVENTS SETTING THE ACTUAL PROPERTY CORNER, A STAMPED "Z" ALUMINUM CAP WILL BE SET ON THE PROPERTY LINE AS AN OFFSET TO THE ACTUAL CORNER WITH THE DISTANCE TO THE ACTUAL CORNER NOTED THEREON.
 - Δ = DELTA
 - R = RADIUS
 - L = ARC LENGTH
 - (R) = RADIAL BEARING
 - < > = RADIAL BEARING AT LOT CORNER
 - OS-1 = OPEN SPACE TRACT - DESIGNATION NUMBER
 - AC-1 = ACCESS TRACT - DESIGNATION NUMBER

NOT TO SCALE

NO STRUCTURES, WELLS OR SEPTIC SYSTEMS ON LOTS 17-24 AND 17-25

RECEIVED
OCT 18 2023
Kittitas County CDS